

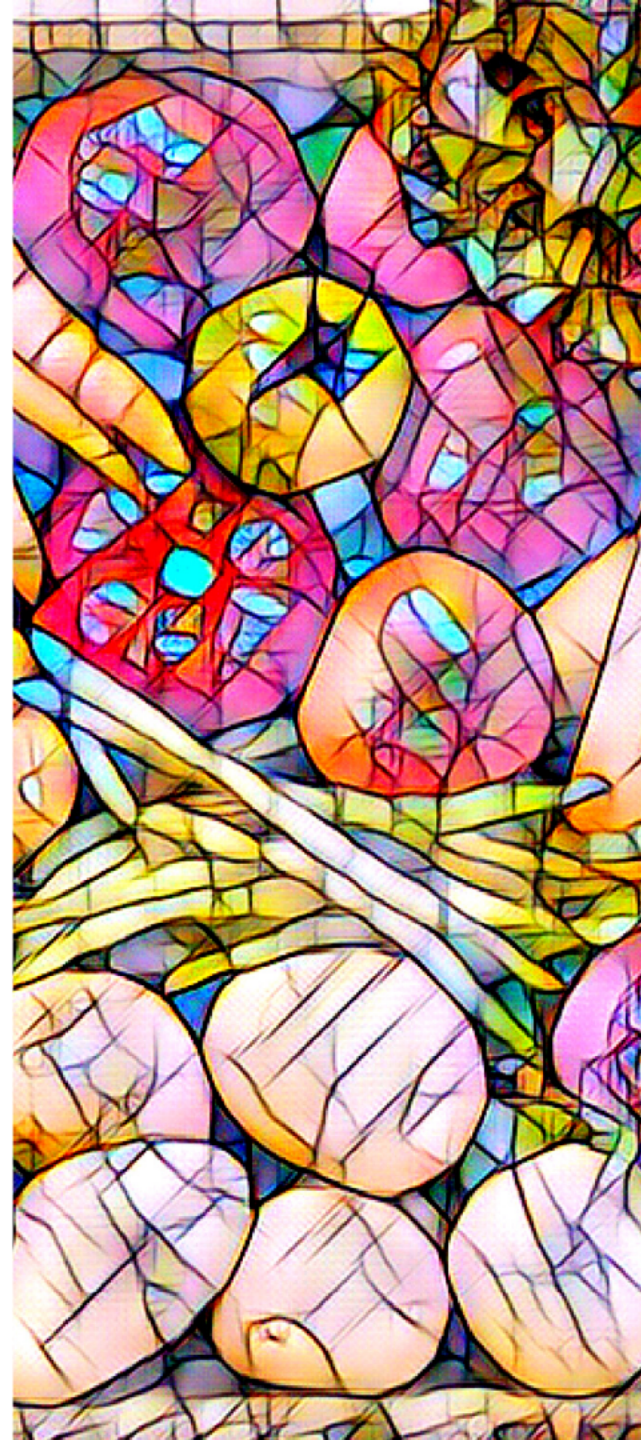
Welcome to Faith in Place's
**Sustainable Food System
Grant Workshop**

Our Vision

Diverse people of all faiths sharing the commitment to care for the Earth.



Faith in Place is the proud Illinois Affiliate of Interfaith Power & Light.



About Us



Rev. Veronica M. Johnson
Outreach Director



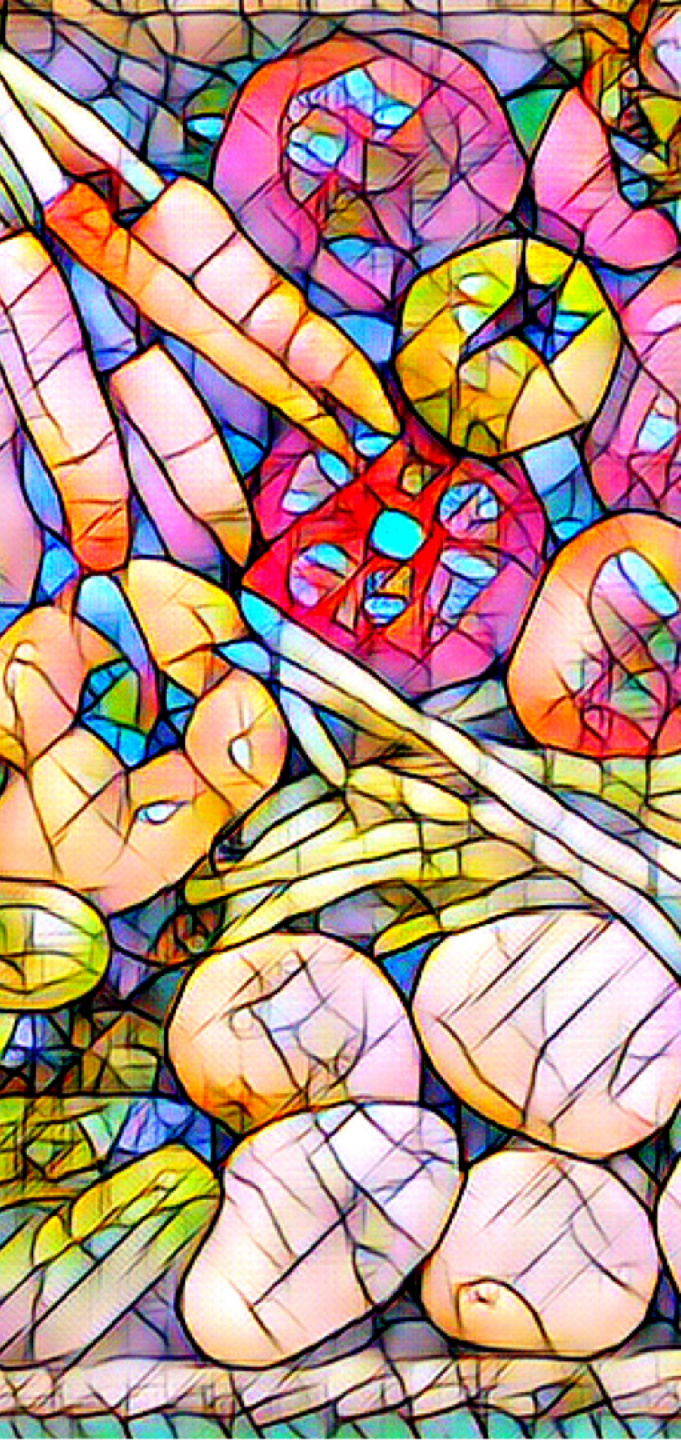
Rev. Cindy Shepherd
Green Team Director

Our Sustainable Food & Land Use Program



Enhancing Resilience, Innovation, and Sustainable Transformation of the Regional Food System Grant Opportunity



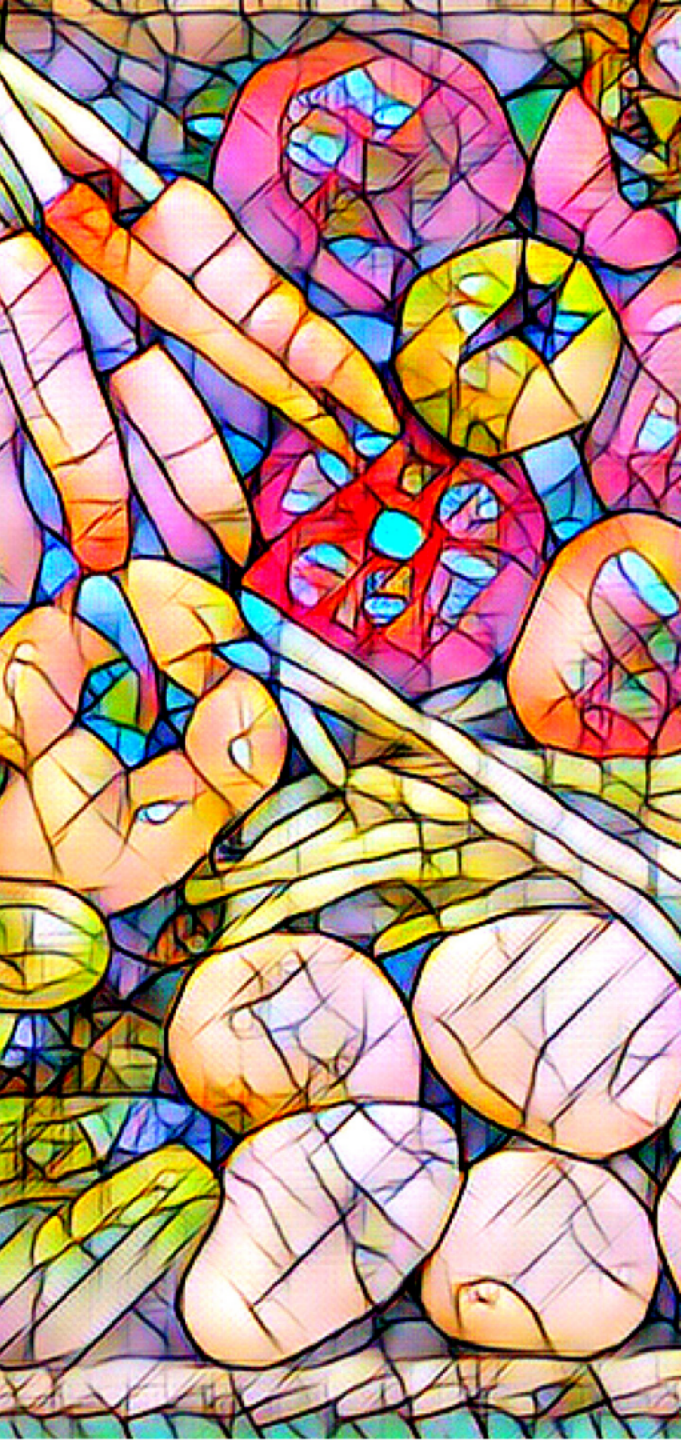


What?

25 Grants

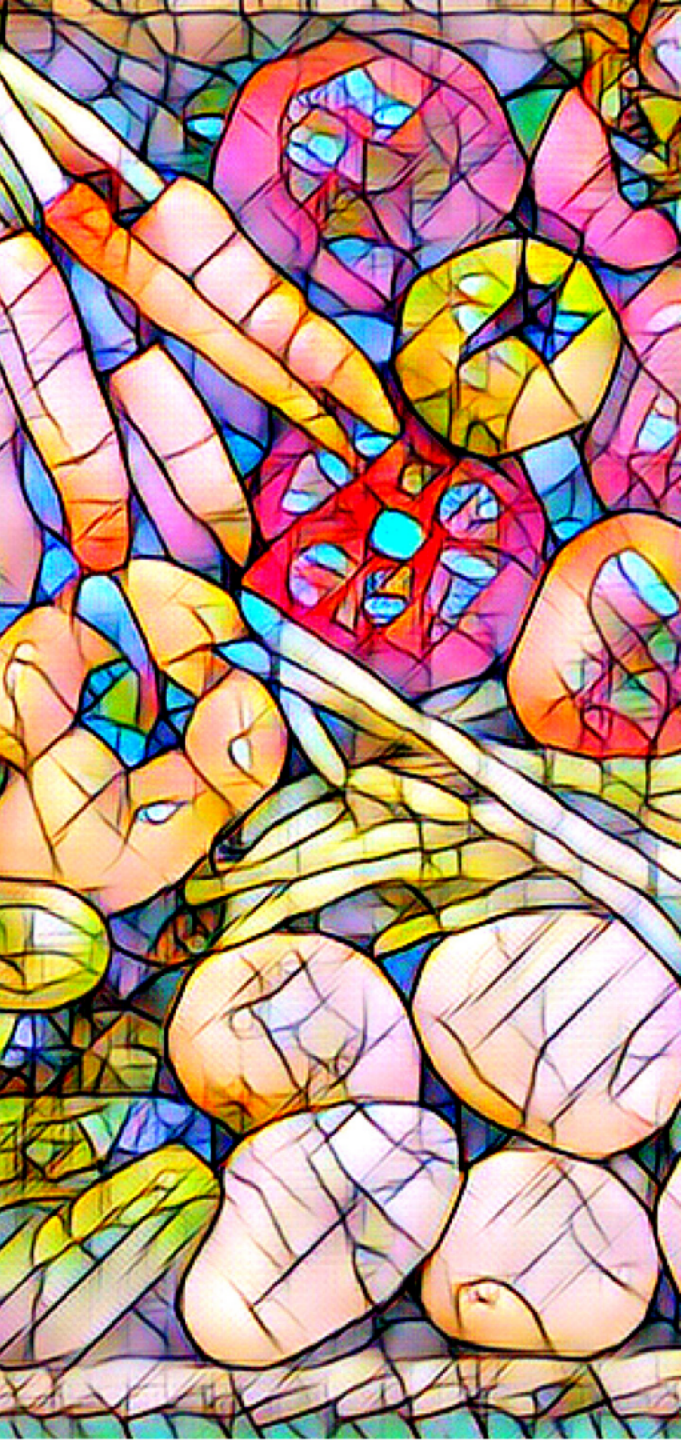
\$7000 Each

To Houses of Worship and Faith
Based 501(c)(3) organizations



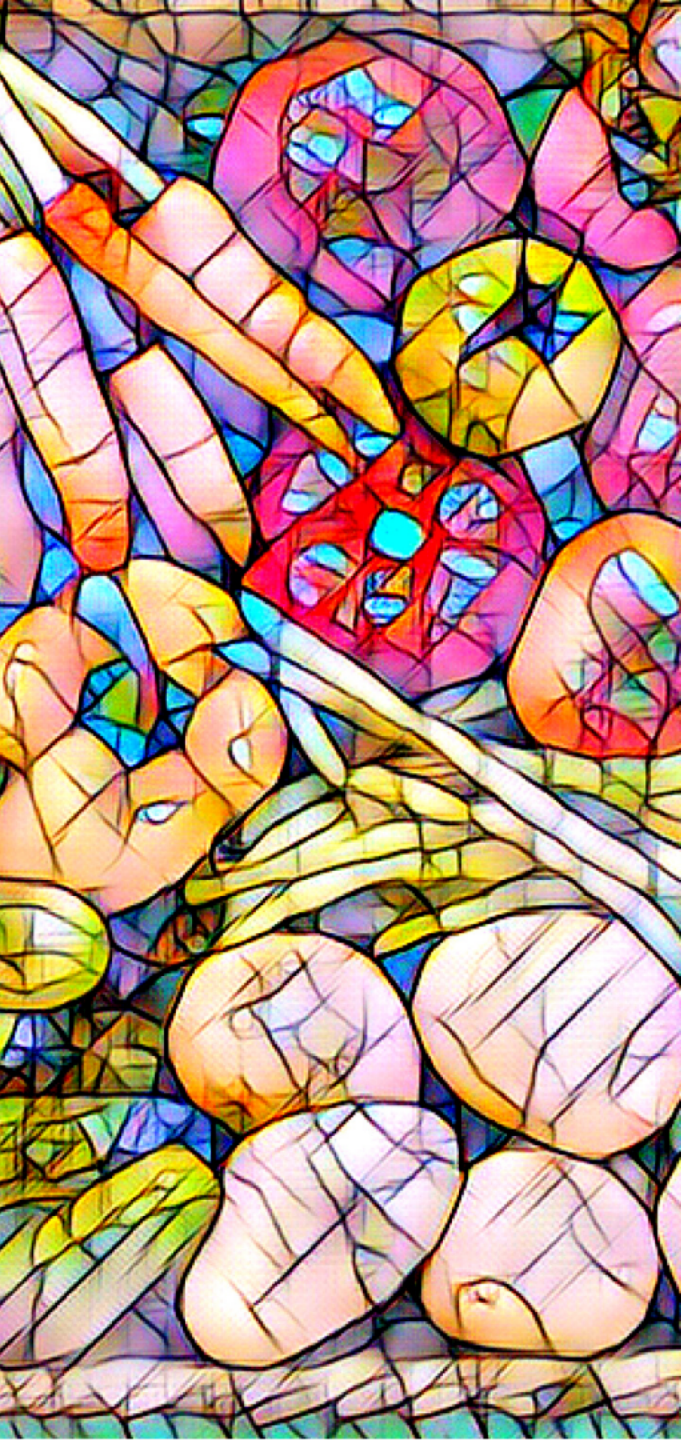
Why?

- **Increase sustainability** within the regional food system, including in food production, processing, distribution, and waste reduction.
- **Support community-led projects** that will have **long-term impacts** providing **access to sustainable, local foods**.
- Help communities prepare and respond to **unexpected events** such as economic hardship, pandemics, and climate change.



Who?

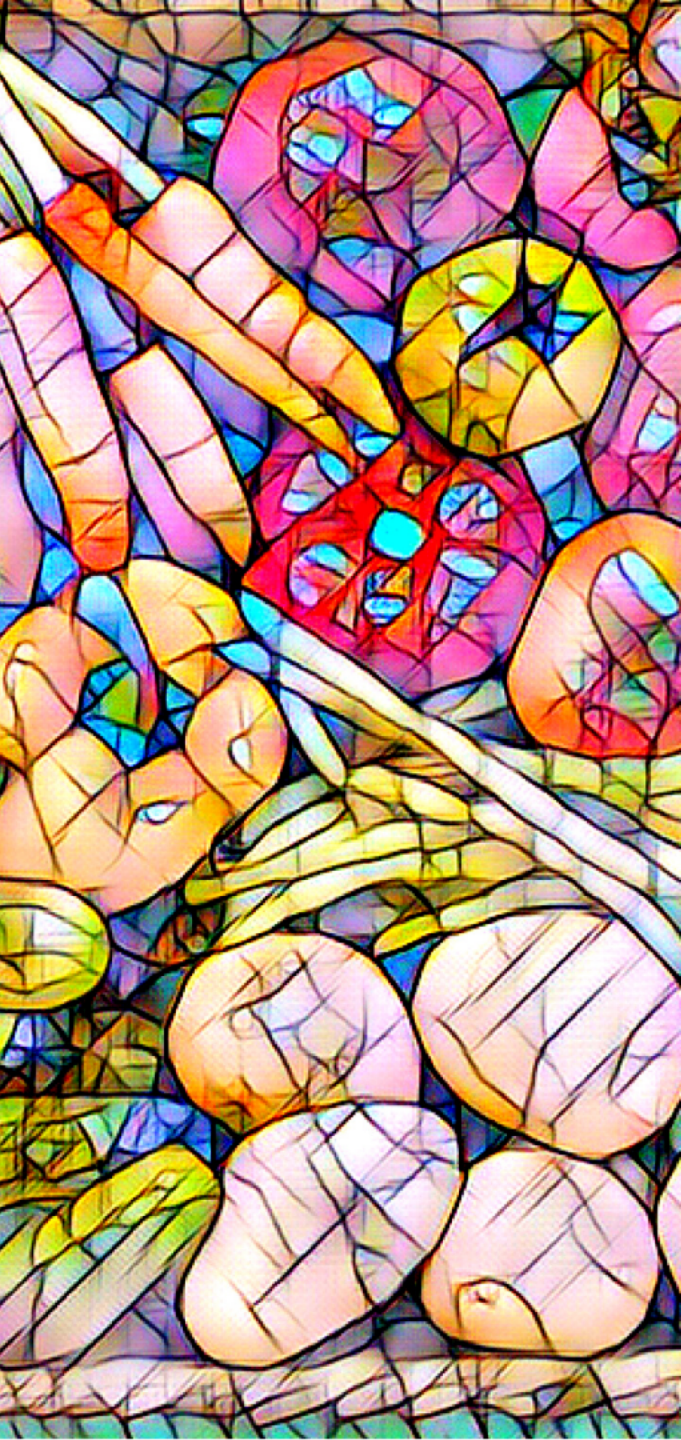
Houses of Worship *and* Faith Based
501(c)(3) organizations who are
building sustainable, equitable food
systems



Where?

IL, IN, WI counties within a 200-mile radius of Chicago

There is a list of eligible counties within the application: bit.ly/eligiblecounties



When?

- Application deadline:
Monday, January 31, 2022
midnight, Central time
- Grant period: April 2022 – March 2023



How? “Think Sustainability”

Project Examples:

- Starting a community food garden
- Increasing the delivery of locally-grown food to homebound senior citizens and other community residents
- Starting a faith-based Community-Supported Agriculture (CSA) farm
- Offering a series of free community classes about nutrition, healthy eating, and community gardening
- Working with farmers to increase the distribution of sustainable, local food
- Starting a food composting system at a house of worship



Examples of non-eligible projects

- Buying non-sustainable, non-local food for distribution
- One-time food distribution events
- Projects that will not have a longer-term impact in enhancing the resilience, innovation, and sustainable transformation of the regional food system

Application must include:

- **Grant Application Form**
- The applicant's signed IRS Form **W-9**
- And the applicant's IRS 501(c)(3) Letter of Determination
(only required for 501(c)(3) nonprofit organizations, not houses of worship)

Please attach the required documents and email to grants@faithinplace.org by the Jan. 31st deadline.

What we are looking for in an application:

- Does project **align** with Grant Goals: Resilience, Innovation, Transformation?
- **Focus:** Is there a well-defined problem and solution?
- **Feasibility:** Does your HoW have capacity to complete the project?
- **Budget:** Is it realistic? Does it align with your objectives?
- **Impact:** How will the community and regional food system benefit?
- **Environmental Justice Communities:** Applicants located in and/or proposing projects that will be implemented in Environmental Justice Communities will be prioritized during the scoring process.

Environmental Justice Communities

- Environmental justice communities are communities **disproportionately impacted by polluted air, land, water, and climate change**. Environmental justice communities are in **urban and rural settings** and are **typically low-to-moderate-income communities of color**
- Faith in Place will use the U.S. Environmental Protection Agency's Environmental Justice Screening and Mapping Tool:
www.epa.gov/ejscreen



What do we have to do if we receive a grant?

- Attend a Kickoff meeting in Early April 2022
- Attend three Check-In meetings during the year (*April 2022- March 2023*)
- Submit a final report March 31, 2023

FAQs



What questions
do you have?



First Presbyterian Church, Champaign



**Nuestra Señora de Guadalupe Episcopal Church,
Waukegan**



**Covenant United Church of Christ,
South Holland**



St. Mark's Episcopal Church, Glen Ellyn

Green Team Coaching

- 180 Current Active Green Teams – all listed on Website
- Each Green Team Assigned Staff Coach
- Coach works with Green Teams minimum of twice per month to implement program
- Strategic Plan is to serve 250 active Green Teams by end of 2022.

Contact Us!

We'd ❤️ to tell
you more about
Green Teams!

Email us:

veronicamj@faithinplace.org

cindy@faithinplace.org

www.faithinplace.org

[@faithinplace](https://www.instagram.com/faithinplace)

