

FAITH IN PLACE 2020

ANNUAL REPORT



LEAD US TO ONCE AGAIN TAKE OUR PLACE IN THE CIRCLE OF LIFE. AS YOU BEST
S THE CHARGE AS A KHALIFAH OF THIS BEAUTIFUL EARTH. HELP US! OPEN OUR
HEARTS, EYES AND MINDS TO STUDY AND UNDERSTAND THIS BEAUTIFUL EARTH
ETERMINE/WE VOW TO DO EVERYTHING IN OUR LIMITLESS ETERNAL POWER TO
RESPECT AND TREASURE MOTHER EARTH. UNDERSTANDING THAT WITHOUT THE
FASTNESS, THE PRECIOUSNESS AND RICHNESS OF MOTHER EARTH'S RESOURCES
HERE WOULD BE NO WE, NO ME, NO US, NO THEM. EVERY ANT, PLANT, OCEAN,
STAR, ROCK, ANIMAL AND HUMAN LIFE CAN BE UTILIZED TO CREATE THE UPMOST
VALUE DURING OUR SHARED EXISTENCE. TOGETHER WE CAN WEAVE A CORNUCO
OF RESPECT AND DIGNITY FOR ALL MANIFESTED LIFE FORMS REVELING IN THE
UNIQUENESS AND BEAUTY OF ALL PHENOMENA. BLESSED ARE YOU ADONAI, WHO
HAS GIVEN US THE MERIT AND THE OBLIGATION TO KEEP AND TO LOVE THE WO

Dear Friend,

The global pandemic magnified our strengths and challenges as a nation, as communities, and as individuals. For Faith in Place, in 2020 we saw even more clearly how embodying our mission internally is necessary to advance our external partnerships with Green Teams and Faith Partners. The enclosed report details how our work empowered people of faith and justice to be environmental justice leaders through **education, connection, and advocacy for healthier communities.**

The wisdom of the ages teaches us to walk the talk. At Faith in Place this translated into board and staff trainings to further our accountability and feedback to advance anti-racism; coming together in racial healing and sharing circles; unpacking our power and privilege with professional facilitation; giving each other the space we needed to process and take care of ourselves; marching together for Black Lives Matter; and finding space to rest and reflect on the power of our mission.

The result: Faith in Place is a flourishing organization. We responded to our Green Teams' needs and supported them as they responded to their communities' challenges in a myriad of ways:

- Over \$200,000 was raised to provide food and personal protection equipment in the midst of the pandemic's food crisis
- Virtual townhalls with legislators and scientists provided information and resources about COVID-19
- A reimagined, innovative, virtual platform engaged our Eco-Ambassador high schoolers
- Racial healing circles for our Green Teams brought new opportunities for healing
- Experiments to renovate House of Worship kitchens to build local food resiliency
- Virtual meetings with policymakers to advocate for clean energy careers — particularly in neighborhoods with high unemployment
- Gatherings online to pray and share together

2020 IN REVIEW



Faith in Place rapidly partnered with Green Teams as they adapted to the COVID-19 pandemic in 2020.

Our Faith in Place team offered over 220 events, resulting in more than 13,000 individual participants from across the U.S. We worked tirelessly to communicate and connect the dots between public health, the global pandemic, climate change, and racial justice.

It is your support that makes advancing our mission possible. In 2020 you joined us by giving generously and volunteering your time. Please read this report to understand in greater detail how you helped fulfill our mission. We invite you to consider donating again by using the enclosed envelope or visiting: bit.ly/annual-report-21

Thank you for your consideration. We wish you, your loved ones, and colleagues strength and good health as we continue to join together in community. Please feel free to reach out to us or the rest of the Faith in Place team at any time. Thank you again for your support.

Rev. Brian J. Sauder
President
& Executive Director

Karen J. Lewis
Board Chair

P.S. In 2020, Faith in Place also announced the expansion of our Summer Youth Eco-Ambassador Program to year-round!

TABLE OF CONTENTS

Program Impacts

Energy & Climate Change	3
Sustainable Food & Land Use	4
Youth Leadership	4
Advocacy	5
Water	5

Green Teams

Program Highlights

Financial Overview

Sustaining Giving Levels

Thanks to Our 2020 Donors

Visit us on our new website:
www.faithinplace.org



Faith in Place is the proud Illinois affiliate of Interfaith Power & Light.

VISION

Diverse people of all faiths sharing the commitment to care for the Earth.

MISSION

Faith in Place empowers Illinois people of all faiths to be leaders in caring for the Earth, providing resources to educate, connect, and advocate for healthier communities.

We believe that when people of faith lead the environmental movement, it is a movement focused on justice and care for our common environment. We operate from local offices serving Chicago, the North and West Suburbs of Chicago, Lake County, Central Illinois, and Southern Illinois.

We implement our five program areas – Energy & Climate, Sustainable Food & Land Use, Water, Advocacy, and Youth Leadership & Empowerment – in close collaboration with our 358 Faith Partners and 181 Green Teams. Our Faith Partners and Green Teams located throughout Illinois represent diverse religious traditions.

"All things work together when you have Faith in Place."

– Pastor Reshorna Fitzpatrick



2020 PROGRAM IMPACT

Energy & Climate Change

Faith in Place addresses climate change by empowering Illinois residents to reduce their dependence on fossil fuels through energy audits, community outreach, solar panel installations, and more.

In 2020, we educated 7,163 individuals on smart energy and partnered with 20 Houses of Worship using solar power.

As a result, together we saved:

- 571.34** Metric tons of greenhouse gas emissions
- 631,029** Pounds of coal burned
- \$48,438** On energy bills
- 809,983** Kilowatt hours of fossil fuel energy burned

Left: First Christian Church of Carbondale uses its solar installation as a teaching model for other Houses of Worship in their area.

Below: Solar installers from the Illinois Solar for All Program installed low-cost solar on a residence in Chicago's South Side during Spring 2020 (Photos courtesy of Certasun).





Sustainable Food & Land Use

Faith in Place increases access to fresh, local, sustainably-grown food and open spaces for recreation. We do this through Congregation Supported Agriculture (CSA) Farms and programs such as: Migration & Me Nature Outings, Story Circles, Habitat Restoration, and Nature Gardens. In 2020, these programs accomplished the following:

- **278,364 Pounds of Food Harvested** from 6 Congregation Supported Agriculture (CSA) Farms
- **66,584 Pounds of CSA Produce** donated to charity
- **350 Shareholders** subscribed to the CSAs
- **37 Acres** of farmland utilized to grow produce
- **1,249 People** attended in-person and virtual nature outings

Youth Empowerment

For over 10 years, our Eco-Ambassador Youth Program has been educating and inspiring young people in environmental stewardship and justice. Successes this past year include the following:

- **34 Youth**, ages 14-17, participated in the Eco-Ambassador Summer Youth Program
- **100% of students** completed and graduated from the program
- **90% of Youth** reported an increased awareness of environmental problems and solutions in their local communities

In 2020, Faith in Place announced that our Youth Eco-Ambassador Program will expand to be a year-round program starting in 2021.

2020 Ecological Educator, Nya, co-lead the Lake County youth program over the summer with other youth from across Illinois.



black woman

\ˈblæk, ˈwʊmən

noun

a melanin enriched being of beauty, intelligence, and power; known for her magical capabilities and distinct glow.

see also: goddess



Advocacy

Faith in Place engages our Green Teams and faith constituency with policymakers across Illinois to demand equitable energy policies that prioritize benefits for environmental justice communities. Advocacy efforts led to the following accomplishments in 2020:

- **700 Faithful Citizens** traveled to Springfield, Illinois for an in-person Advocacy Day
- **800 Faithful Citizens** rallied and met with legislators online for a virtual Advocacy Day
- **34 Faithful Citizen Workshops**



Hundreds of faithful advocates traveled to the Statehouse in Springfield in early Spring 2020 to encourage their lawmakers to pass legislation addressing climate change.



Faithful advocates gather with their representatives.

Water

Faith in Place works with people of faith to build solutions for their most pressing water needs. Our water programs empower communities to work together to maintain a clean and abundant water supply for Illinoisans and prevent the disproportionate burden of flooding. In 2020, Faith in Place achieved the following impacts:

- **617,539 gallons of rainwater diverted** from combined sewer systems to prevent basement flooding
- **22,962 gallons of green infrastructure storage capacity added**
- **114 rain barrels** deployed and/or re-deployed
- **5 rain gardens** installed and/or maintained



GREEN TEAMS

The Green Team model is Faith in Place's most important strategy for mobilizing action for environmental and climate justice.

Green Teams are three or more members of a House of Worship who provide cooperative leadership to educate, connect, and advocate for healthier communities.

Green Teams educate their members and motivate their faith communities to incorporate environmental consciousness and justice into all activities. All Green Teams are mentored (at no cost to the Green Team) by a Faith in Place outreach staff "coach." In 2020, we provided coaching support to 181 Green Teams located throughout Illinois. Check out these Green Team highlights from 2020.



**AMERICAN CLIMATE
LEADERSHIP AWARDS**

The Green Team Model was honored as a finalist for Eco-America's American Climate Leadership Award.

Stone Temple Heritage Peace Garden

With Board Member Rev. Reshorna Fitzpatrick, TIME Pastor of the Year and one of Fortune magazine's World's 50 Greatest Leaders

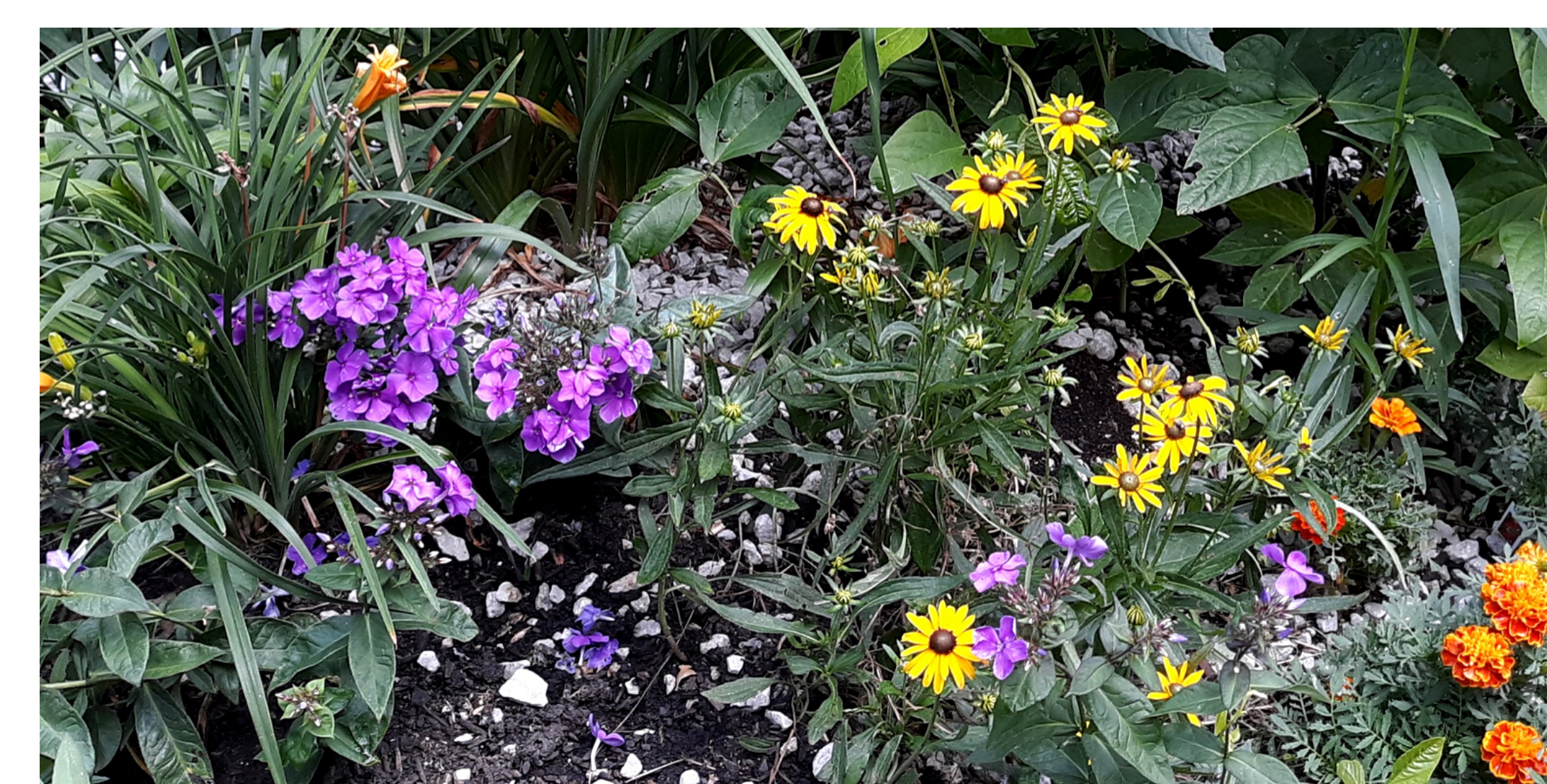
Pastor Reshorna Fitzpatrick and the Historic Stone Temple Baptist Church created an urban garden as a safe haven of peace for the community. Faith in Place connected Stone Temple with Chicago Sinai Congregation, two different Green Teams from opposite sides of Chicago. The teams gardened together and shared their faith, heritage, and cultures. The creation of the garden was followed by the installation of a performance stage, and will soon be home to a meditation garden and a social enterprise to employ young people.

Preserving Water Through Education and Gardening

St. Simon's Episcopal Church in Arlington Heights expanded upon Faith in Place's "Our Grandchildren's Water" curriculum by adding videos and creating a shareable presentation. The videos brought the presentation to life and made the lessons more engaging and relatable. The education and inspiration were a catalyst for St. Simon's Green Team. The group also built a rain garden and butterfly/native plant garden to address water runoff and flooding issues at the House of Worship.



Pastor Reshorna Fitzpatrick (right) from the Stone Temple Green Team posing with the Chicago Sinai Congregation Green Team as they together work on the Stone Temple Heritage Peace Garden (shown above).





PROGRAM HIGHLIGHTS

PIVOTING DURING COVID-19

COVID-19 Response - Food Relief Grants

Faith in Place’s mission is to build healthier communities. A healthier community consists of sustainable food, clean energy and water, a healthy environment, social justice, racial equity, public health, and more. In 2020, Faith in Place began partnering with the Chicago Region Food System Fund to connect 72 Houses of Worship with \$200,000 of COVID-19 Emergency Food Relief.

“Since the pandemic started, we have seen patronage [at the food pantry] double, averaging 50-60 patrons/families representing as many as 420 individuals each distribution...We expect these connections to last beyond the COVID-19 pandemic.”

-McKinley Memorial Presbyterian Church

Reimagining Sustainable Food and Land Use Programs

COVID-19’s unprecedented challenges required Faith in Place to creatively adapt all programming. Our Migration & Me Program facilitates direct and meaningful connections with nature, especially for low-to-moderate-income communities of color.

Within just two weeks of the COVID-19 onset, Faith in Place premiered our first virtual nature outing video, a hike through Whistler Woods. Due to its success, staff produced additional videos filmed at natural areas located in environmental justice communities of color including Marian R. Byrnes Natural Area and Flatfoot Lake in Beaubien Woods where staff member Princess taught a summertime yoga lesson.

“I have lived near Eggers Grove [Forest Preserve] all my life and have never taken a walk through there. I will make it a point to do so as soon as possible.” ~ Virtual Nature Walker

Videos are available here:

www.youtube.com/user/faithinplace/videos



The “Love Fridge” outside Stone Temple Baptist Church allows anyone to drop off healthy food or take food home to their family 24/7.



Princess leading an outdoor yoga session available on our Youtube Channel.



2020 GREEN TEAM SUMMIT

The 2020 Green Team Summit was Faith in Place's first virtual summit. Hosted over 5 days, the Summit included a keynote panel, workshops, and a closing networking session.

The theme of "**A Just Recovery**" was explored through experts and participants discussing the connection between climate change, racism, and COVID-19.

General Highlights

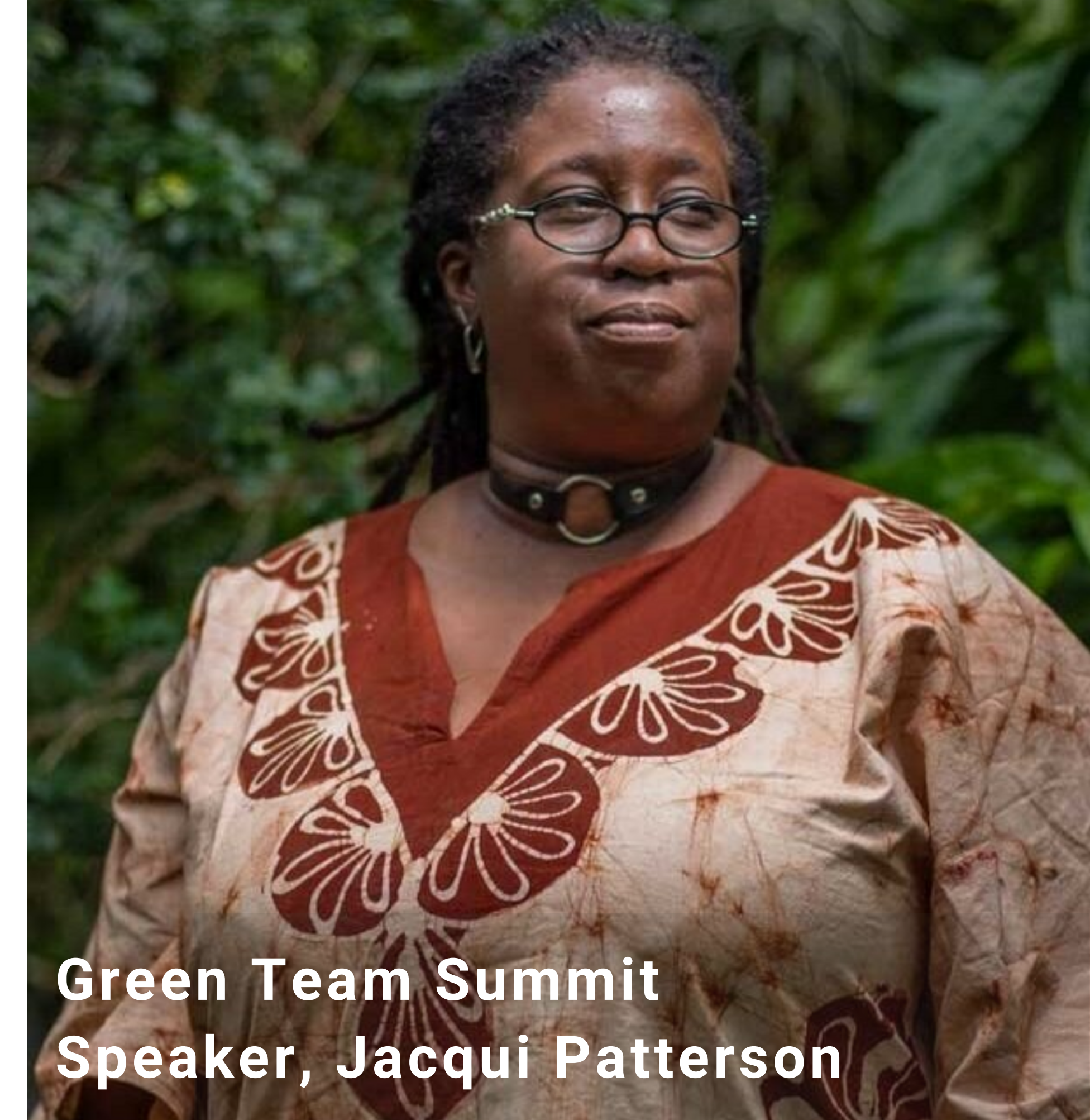
- Over 2,000 people registered from across the world including from 49 states, Washinton D.C., Puerto Rico, and 25 countries
- We launched our first independent Green Team Summit event website
- 12 virtual, interactive, workshops were hosted by experts from across the globe
- We partnered with 27 organizations nationally, growing the network of faithful people caring for the Earth

NEW! YEAR-ROUND ENVIRONMENTAL YOUTH PROGRAM

In December of 2020, we made the exciting announcement that Faith in Place would launch a new, year-round Eco-Ambassadors Youth Program. For 10 years, we have educated and inspired youth from environmental justice communities during the summer. This expansion allows the youth to continue their leadership projects, advocating for environmental justice, and connecting to nature all year. Your support allows more youth to be mentored and empowered to advance Earth care and justice.

"Faith in Place's Eco-Ambassador Program has helped grow my passion for environmental justice and to combat climate change. Striving for environmental justice is something I want to continue to fight for throughout my life." -Mia, 2020 Eco-Ambassador

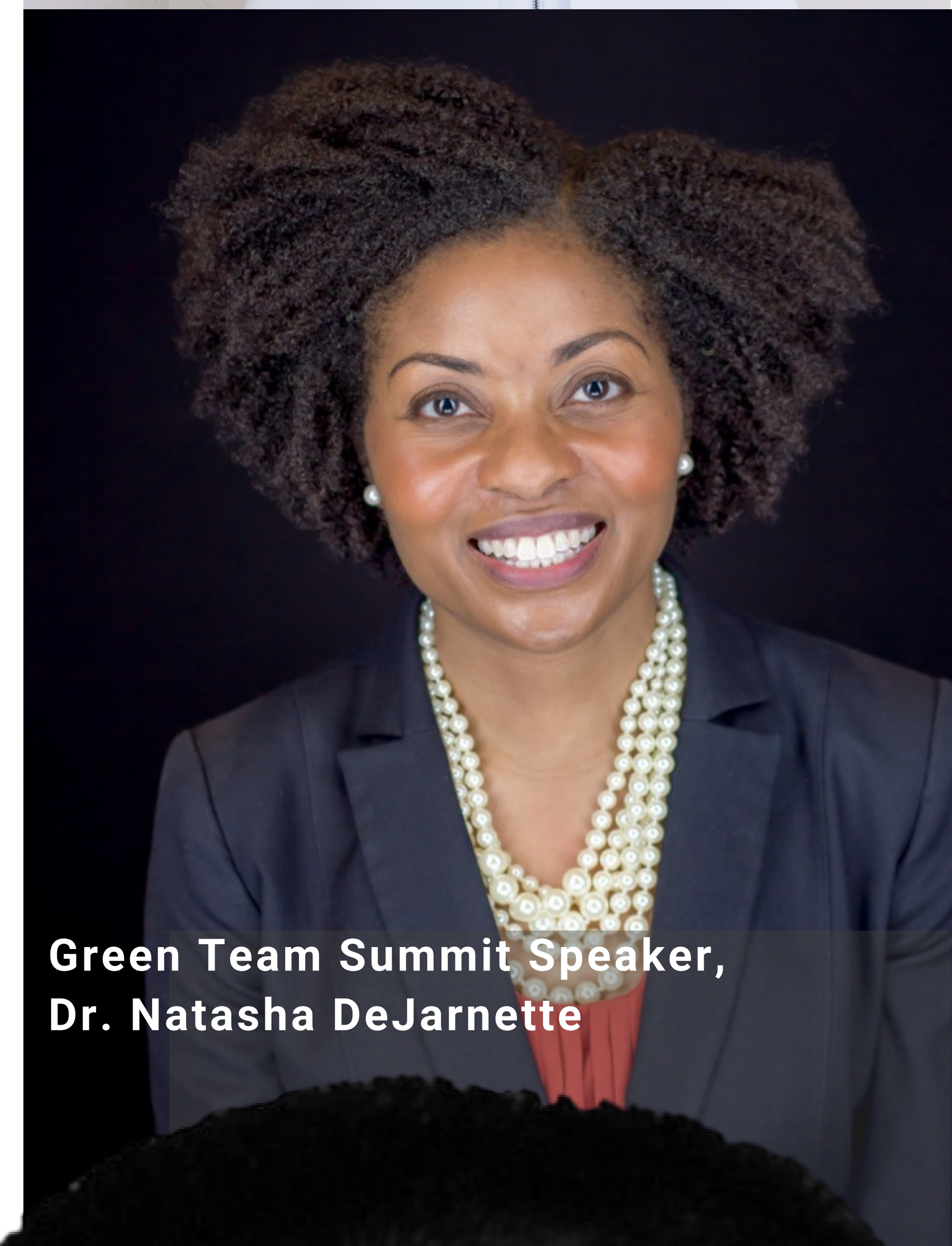
Cesar, or "DJ Antonio Cesar" (right) was not only the Green Team Summit's DJ, but the incredibly talented lead of our new, year-round youth program.



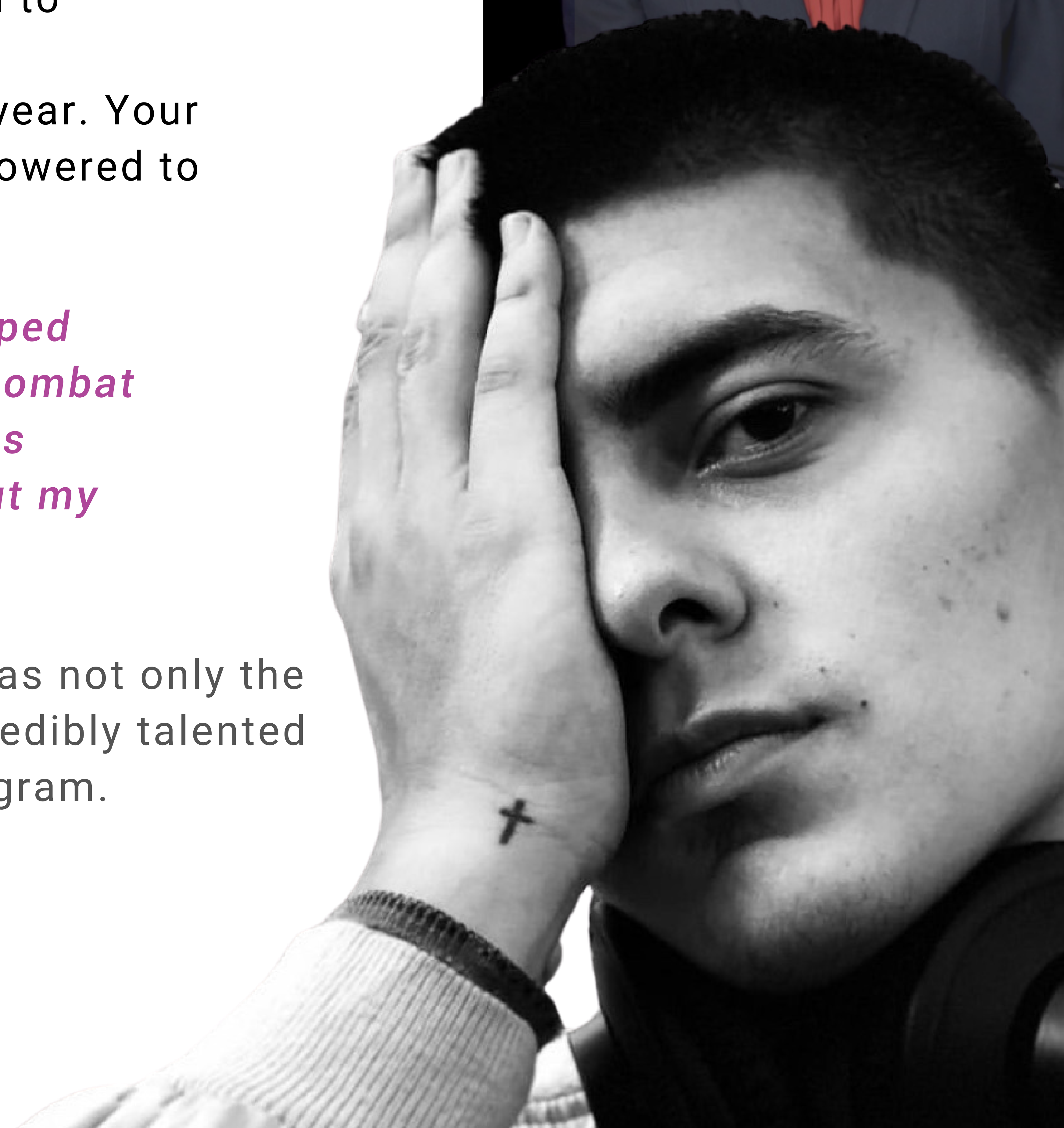
Green Team Summit Speaker, Jacquie Patterson



Green Team Summit Speaker, Yoca Ardit-Roca

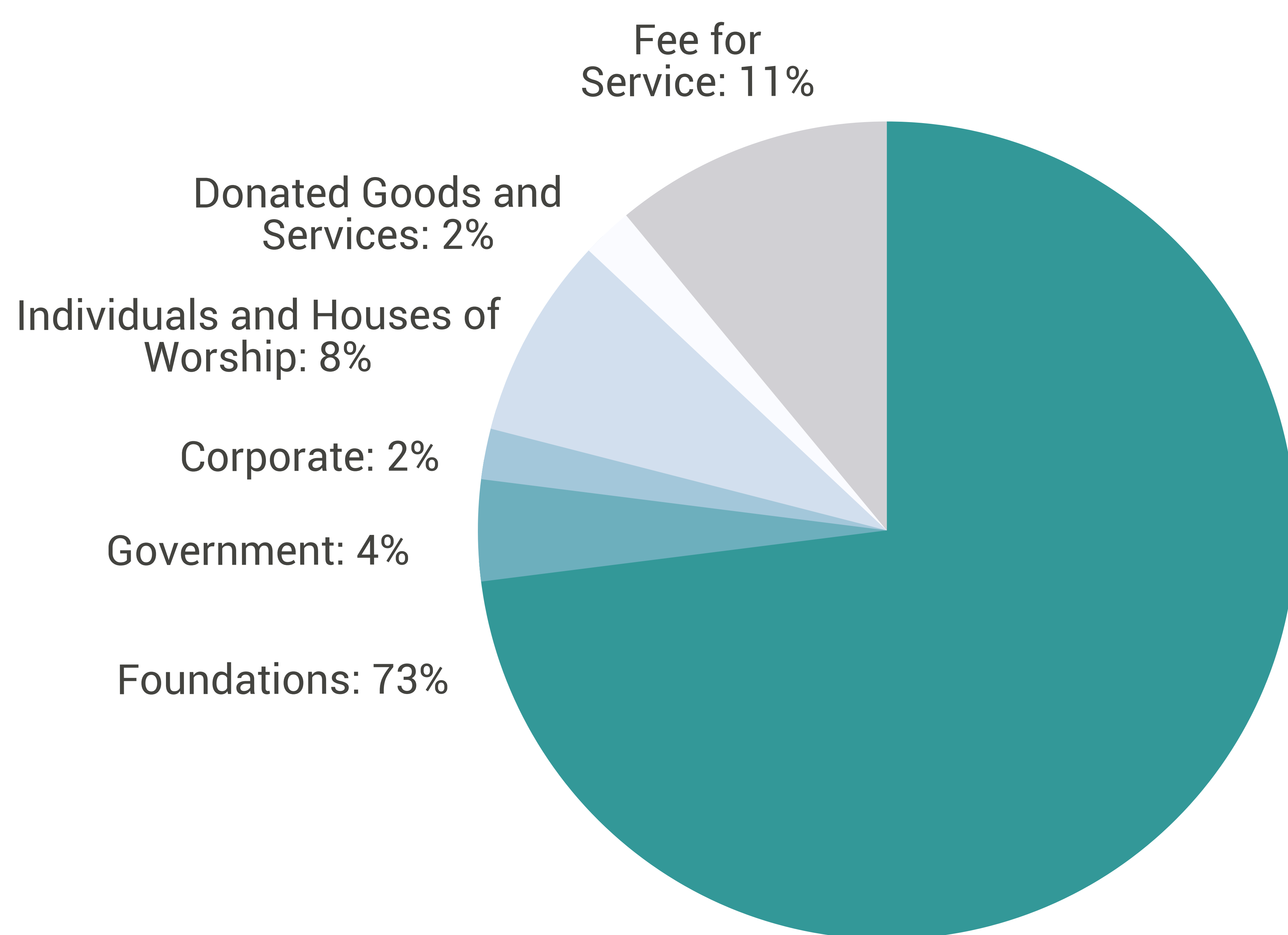


Green Team Summit Speaker, Dr. Natasha DeJarnette



FINANCIAL OVERVIEW

Thanks to your support, 2020 was a year of positive financial growth for Faith in Place. We are deeply grateful to our donors who made our growing statewide impact and net reserves possible, even during this challenging year. As a result, we are strategically positioned to continue to expand our mission in 2021.

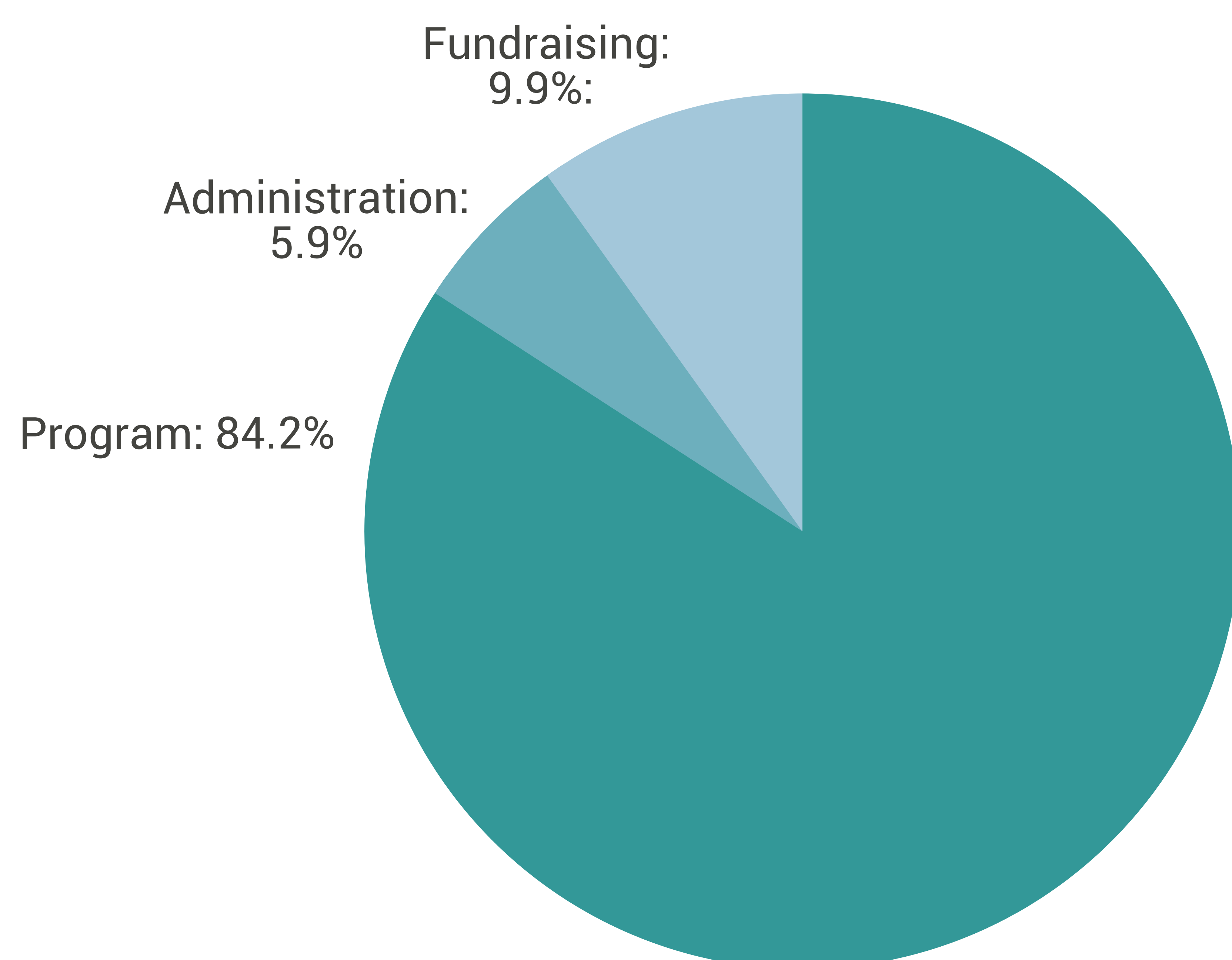


NET ASSETS

TOTAL: \$1,826,577

REVENUE

TOTAL: \$2,503,605



EXPENSES

TOTAL: \$1,799,454

*This financial report is prepared by our CPA but unaudited at the time of Annual Report printing.



MEET OUR SUSTAINING DONORS

Founders Circle Spotlight

Sharon Monday & Jack Paxton | Urbana, IL

"We choose to support Faith in Place because of its focus on empowerment, the many opportunities to listen and learn from and encourage each other, and advocate for a healthier environment.

We love connecting to the Earth and other volunteers at Sola Gratia Farm in Urbana; participation in the Green Team at First Mennonite Church Urbana-Champaign; and through the annual Green Team Summit and Advocacy Day. Most recently, we are supporting youth in Central Illinois to participate in the Eco-Ambassador program."

"Faith in Place has effectively mobilized faith communities throughout the state of Illinois to bring about environmental justice through creative processes that respect grassroots wisdom, public participation, and empowerment."

-Sharon Monday & Jack Paxton

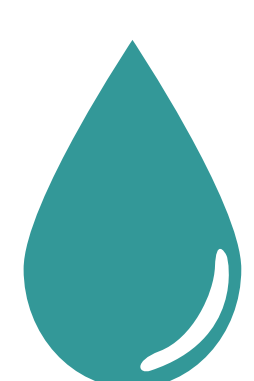
Joining the Founders Circle

The Founders Circle is composed of generous donors who make a 5-year commitment to support Faith in Place. Contributions made by Founders Circle members support Faith in Place's unrestricted operating funds to provide a stronger foundation and a stable future for expanding our programs.

Founders Circle members make a pledge at one of three generous giving levels:



Healthy Soil: A pledge to give \$1,000 per year for five years, or approximately \$83 a month. Donors at this level help our communities connect to the Earth through programs like Congregation-Supported Agriculture, nature outings, and habitat restoration.



Fresh Water: A pledge to give \$5,000 per year for five years. Donors who give at this level support communities with efforts like installing rain barrels, building rain gardens, and protecting our shared drinking water.



Clean Air: A pledge to give \$10,000 per year for five years. Donors at this level support our advocacy and education efforts to champion just climate solutions and create a safe and healthy future for all communities.



Sharon and Jack, Founders Circle Members, out connecting with nature. Below, a faithful advocate joins Faith in Place for Clean Energy Advocacy Day in Springfield, Illinois.





Katie and Megan (above) and Faith in Place joined Black Lives Matter Protests following the death of George Floyd in 2020.



MEET OUR SUSTAINING DONORS CONT.

Fellowship Circle

Members of the Fellowship Circle have supported Faith in Place with generous gifts of \$500 or more in the past year. This unique fellowship of diverse individuals of all faiths shares a commitment to care for the Earth. Fellowship Circle contributions are critical to sustaining Faith in Place's work to educate, connect, and advocate for healthier communities.

Founders Circle and Fellowship Circle Members are invited to exclusive programs, presentations, and events throughout the year, and are recognized on our website, in our Annual Report, and at the Annual Celebration and Fundraiser.

If you would like to fund Faith in Place's mission in perpetuity, please consider leaving a bequest or estate gift in your will. Contact Rev. Brian Sauder for more details at brian@faithinplace.org or 217-649-1898.

Earth Champions

The Earth Champions program was created to build a sustaining commitment between Faith and Place and the Houses of Worship we serve. Faith in Place provides free resources and support to faith communities to advocate for the Earth. When a House of Worship gives back to Faith in Place with a gift of \$50 or more, we celebrate them as an Earth Champion with a signed certificate, and recognize them on our website. We celebrated over 35 Earth Champions throughout Illinois in 2020.

THANK YOU TO OUR 2020 DONORS

Foundations and Sponsors

\$100,000 and Higher

Chicago Region Food System Fund
Energy Foundation
Illinois Science and Energy Innovation Foundation (ISEIF)
Slipstream
The Joyce Foundation

\$50,000-\$99,999

Crown Family Philanthropies
Elevate Energy
Grand Victoria Foundation
Julian Grace Foundation
Kalliopeia Foundation
The Builders Initiative
The Lumpkin Family Foundation
USDA Agricultural Marketing Service
Walder Foundation

Faith in Place helped fund the food relief distribution across the state in 2020 in rapid response to the Covid-19 pandemic.





Foundations and Sponsors Cont.

\$25,000-\$49,999

Conant Family Foundation
 Doris Duke Charitable Foundation
 Forefront
 Gaylord and Dorothy Donnelley Foundation
 J.R. Albert Foundation
 Just Transition Fund at the Rockefeller Family Fund
 Searle Funds at The Chicago Community Trust
 US Forest Service
 Windward Fund

\$10,000-\$24,999

Alvin H. Baum Family Fund
 Christopher Family Foundation
 Climate Reality Project
 ComEd
 ecoAmerica
 Franklin Square Foundation
 The Chicago Community Trust Healing Illinois
 Metropolitan Planning Council
 Safer Foundation
 The Grainger Family Descendants Fund
 Woods Fund

\$1,000-\$9,999

Archdiocese of Chicago, Dept. of Stewardship and Development
 Citizens Utility Board (CUB)
 EarthShare
 Environmental Law and Policy Center
 Field Museum of Natural History
 Gaggero & Tully
 Illinois Environmental Council
 Illinois Stewardship Alliance
 Local 134 International Brotherhood of Electrical Workers
 McCormick Theological Seminary
 Natural Resources Defense Council (NRDC)
 Openlands
 Schneider for Congress

Sierra Club North Central Region
 Sunrun
 The Nature Conservancy
 Union of Concerned Scientists
 Waukegan Park District

\$500-\$999

Alliance for the Great Lakes
 Davidoff Mission-Driven Business Strategy
 DePaul University Environmental Science & Studies & Campus Catholic Ministry
 Lutheran School of Theology at Chicago
 Midwest Energy Efficiency Alliance
 Mission Accounting, Inc.
 Parachin Design Studios
 Pizza and Social Justice
 Shedd Aquarium
 Sierra Club Illinois Chapter
 The Strategy Group, LLC
 Unitarian Universalist Advocacy Network of IL (UUANI)
 Yale Forum on Religion and Ecology

Less than \$499

A Perfect Promotion
 All Bright Solar
 AmazonSmile Foundation
 Arkansas Interfaith Power and Light
 Center for Christian Life Enrichment
 Coalicion Latinos Unidos de Lake County
 Fresh Taste
 Grace Center Ministries
 Green Community Connections
 Greencorps Chicago
 Hegre, McMahon, & Schimmel, LLC
 HomeLight
 Laudato Si' Ministries
 Prairie Rivers Network
 Public Communications, Inc
 Trajectory Energy Partners
 Young Democrats of Lake County



When you have more than you need, you build a bigger table, not a higher fence. Food justice is a civil rights issue.

-Monica Brown Moss, 2020 Green Team Summit





Jennifer (above) and Eduardo (below) were two of the Eco-Ambassadors who learned about environmental justice and care through our 2020 Summer Youth Program.



Earth Champions

Arcola Presbyterian Church USA
 California Gardens Christian of Love Baptist Church
 Cenacle Sisters
 Chicago Community Mennonite Church
 Countryside Church Unitarian Universalist
 Emanuel Congregation, Chicago
 Environmental Ministry Team of First Congregational Church of Glen Ellyn
 Euclid Avenue United Methodist Church
 First Mennonite Church of Champaign-Urbana
 First Presbyterian Church, Monticello
 First United Methodist Church of Arlington Heights
 First United Methodist Church of Normal
 Fox Valley Presbyterian Church
 Good Shepherd Presbyterian Church in Chicago
 Holy Covenant MCC
 Lincoln Park Presbyterian Church
 Lutheran Church of Mahomet
 McKinley Presbyterian Church
 New Deliverance Presbyterian Church
 North Shore Unitarian Church
 Our Saviour's Evangelical Lutheran Church
 Pilgrim Congregational Church
 Prince of Peace United Methodist Church
 Sisters of Charity of the Blessed Virgin Mary
 St. John's Evangelical Lutheran Church, Wilmette
 St. Andrew's Lutheran Campus Center
 St. Mark's Episcopal Church, Glen Ellyn
 St. Peter's United Church of Christ, Champaign
 The Episcopal Church of the Transfiguration
 Trinity United Church of Christ, Chicago
 Unitarian Church of Evanston
 Unitarian Church of Hinsdale
 United Methodist Women of Park Ridge
 Unity Temple Unitarian Universalist Congregation, Oak Park
 Wellington Avenue United Church of Christ

Founders Circle Members

Anonymous
 Andy & Rich Amend
 Marilyn Antonik
 Barbara W. Boockmeier
 Rev. Dr. Clare Butterfield
 Elena Canler and Andrew Bettis
 William W. Capel and Ernest J Martin, III
 Susan and Claude Cole
 Corey Coscioni
 Megan and Sam Cox
 Lynn Donaldson and Cameron Avery
 Kristina Entner and Edward Malone
 Fogelson Family Foundation
 Jane and Eric Freyfogle
 Avijit Ghosh
 Kathy and Steve Gossard
 Karen and Alan Greenland
 Hanley Foundation
 Scott Harper
 Steve Huels
 Marian Huhman and David Buchner
 David Johnson
 Jan and Earl Kellogg
 Karen and Bob Lewis
 Margo and Greg Lykins
 Karen S. McKenzie
 Robert McKim
 Ronald E. Meissen, Ph.D.
 Monday Paxton Family
 Jo Ann and Steven Potashnick
 The Rehman Family
 Jan and Dale Ritzel
 Dr. Gabrielle and Rev. Brian J. Sauder
 Rev. Cindy Shepherd and Timothy Hartin
 Lou J. Shepherd
 Julie and David Sherwood
 Rev. Paul A. Spangler
 Drs. Ashlynn and Andrew Stillwell
 James A. Vroman
 June and Ashton Waller
 Kim Weaver
 Rev. Dr. Barbara A. Wilson
 Rabbi Michael and Karen Zedek



THANK YOU TO OUR 2020 DONORS

Fellowship Circle

\$10,000

Ann Boisclair and Jeffrey Jens
Sunflower Fund

\$2,500-\$9,999

Wendy Paulson

\$1,000-\$2,499

Sue Biddle
Joanne Kouba and Jim Cavallo
Dorfman-Hearst Charitable Fund
Frank Fletcher
Hanson Family Foundation
Veronica and Rev. William Kyle
Howard Learner and Lauren Rosenthal
Dr. Jules Eckersley and Ian H. Morrison
Catherine and Paul Myers
Hope and King Poor
Diane and Joseph Salvato
Jessica and Steve Sarowitz
Mary and Marvin Sauder
Rand Sparling
Gail A. Wisniewski

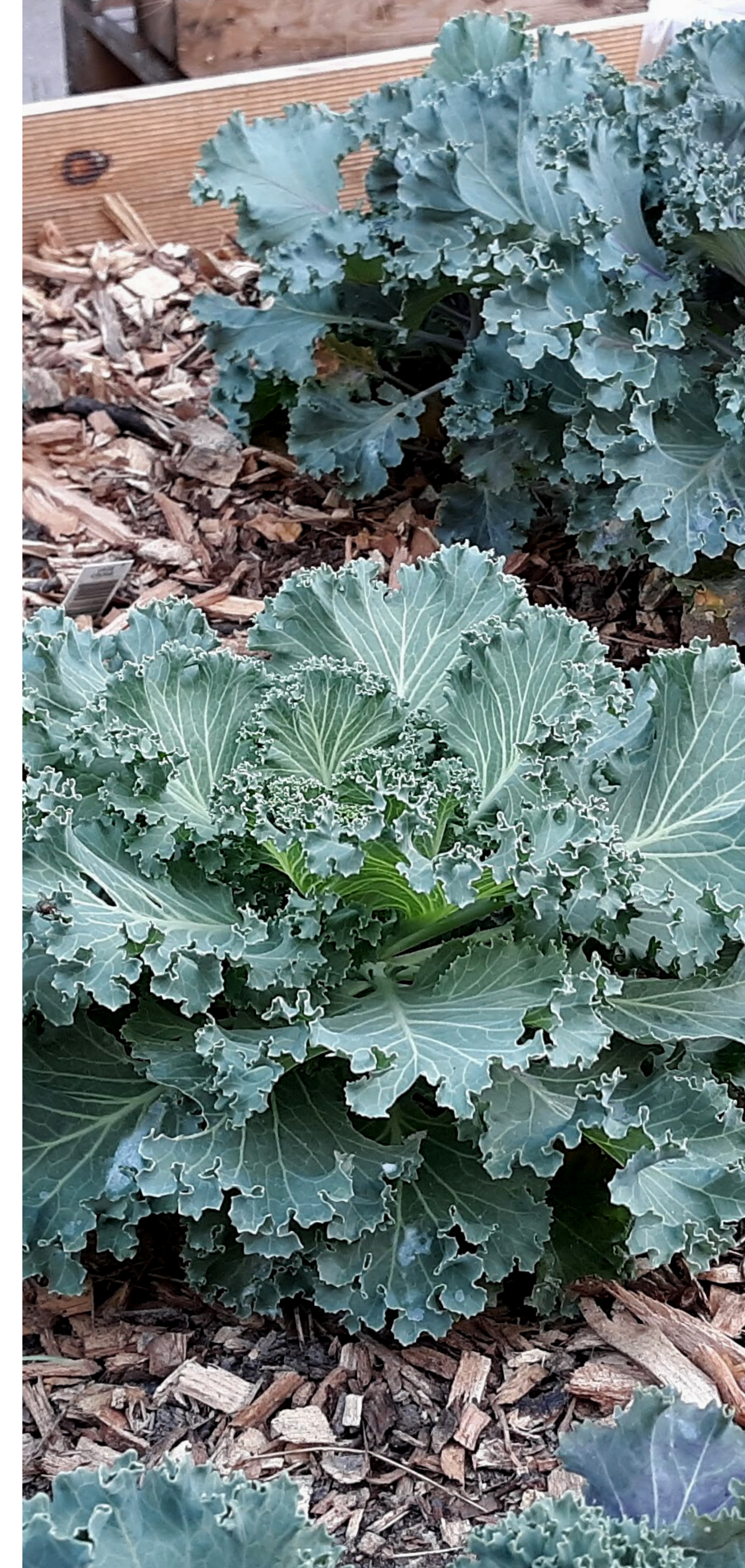
\$500-\$999

Anonymous
Coletta and William Ackermann
Ruth and Jim Anderson
Sam Bawamia
Fran and Ray Bell
Alison and John Blaser
Sue and Robert Boucek
Barbara and Eric Burgess
Michael B. Crosby
Gayle Edmunds
Eleanor and Charles Evans
Peter A. Gorr
Christine M. Grable
Rev. Amy and Dr. Robert Heinrich
Ginnie Judd
Emily Laugesen
Amy Little and Lee Ravenscroft
Dorothy Neumann
Joan and Jeff Petertil
Richard V. Pokorny
Henrietta Saunders and Richard Day
Margaret Shaklee
Rev. Eileen M. Shanley-Roberts
Commissioner Debra Shore
Sara Spoonheim Amit and Yali Amit
Karen Van Meter
Anne and Edward White

Other Generous Donors

\$250-\$499

Rev. Scott Aaseng
Mary Lou and Rev. David Bauer
Carissa Casbon
Stephanie Chu
Ann Courter and Norman Hirsch
Nancy L. Cowger
Beth and Harry Drucker
Courtney and Nick Eccles
Laura S. Erbe
Charles Frank
Kurtis Frank
Catherine R. Game
Joanne and John Gerlach
Harry Grace
Cynthia M. Grau
The Rev. Celeste and Josiah Groff
Teresa Harmon
Charlotte Heeg and James Valentine
Jean Linsner and Paul Heltne
Paula and Theodore Hiebert
Michael S. Hogue
Gay and Larry Holman
Rachel Rasmussen and Robert Hudson
Judy Jackson
Karen Kortsch
Dana Levinson
Suzanne Williams and David Lloyd
Thomas P. Maillard
Rep. Joyce Mason
Joyce Mast
Deborah and Thomas Maxwell
Rep. Rita Mayfield
Maggie McGuire
Liz and George Miley
Martha H. Moore
Bob Morgan
Elaine Nekritz
Marcia E. and Randall Nelson
Gordon Oyer
Louise Przywara
Beth Rempe
Sara Reschly
Harriette and McLouis Robinet
Piper And Jono Rothschild
Juliana Schafer
Kathy and Mark Schoeffmann
Jan L. Siders
Sharon and Jed Silberg Family
The Skousen Family
Susan and Errol Stone
Susan Strong-Dowd
Debra and Thomas Sutter
Eileen Sutter
Cornelia R. Wesley
Rev. Eileen Wiviott
Caroline F. Wooten



Faith in Place Green Teams found new ways to continue their Earth care work during the COVID-19 pandemic, whether through gardening outdoors (above) or gathering in open areas following public health guidelines (below).





THANK YOU TO OUR 2020 DONORS

\$50 - \$249

Anonymous
 Veronica Alexander
 Jill Allread
 John Amdor
 Loryn D. Ankeny
 Beverly and Morris Applebaum
 Michael Atkinson
 Ruth and James Babcock
 James Bachman
 Judy Ball
 Allan and Lorie Bartel
 Laura Basanta and Eugene Basanta
 Judy Beck
 Julia K. Beckman
 The Rev. Allison Bengfort
 Sarah Bennett
 LeeAnne Beres
 Alice Berkson
 Roger J. Bialcik
 Phyllis A. Bird
 Philip R. Blue
 Jacquelyn Bolles
 Teresa and Andrew Bonifas
 Claire Boockmeier
 Suzanne Booker-Canfield
 Mary Jane Keitel and Mark Bouman
 Tamara Bouseman
 George E. Bradfield
 Elizabeth W. Brewer
 Mark Burger
 Bryan Burke
 Jane Cain
 Melanie T. Campbell
 Pamela Canler
 Leslie Cannon
 Jennifer Cassel
 Deborah Cavanaugh-Grant
 Craig Chamberlain
 Jennifer Clark
 Jessica Collingsworth
 Erin M. Connelly
 Veronica Cook
 Lois Cornils
 Sarah J. Coulter
 Gloria and Bruce Cox
 Gelasia Croom
 Karina Cruz
 Jim and Laurie Cubit
 Mayor Sam Cunningham
 Janet Silverberg Dale and Foster Dale
 Diane Davis
 William C. Dawe
 Mary Ellen E. DeClue

John Delurey
 Laura Derks
 Amy T. Dickinson
 Daniel C. Didech
 Carol Emmerling-DiNovo and Frank DiNovo
 Priscilla J. Dreyman
 William J. Duey
 Rev. Peter H. Dyck
 Anna and Garrison Dyer
 Jenny Earlandson
 Rev. Dr. Linda Eastwood
 Julie Eber
 Rep. Mary Edly-Allen
 Donna Evans
 James F. Evans
 Doug Farr
 Andrew T. Fisher
 Sarah Flosi
 Kathleen Ford
 Pam and Tom Frech
 Carolyn S. Funk
 Barbara Futter
 Bonnie and Jeffrey Gahris
 Linda J. Gaska
 Smita Ghosh
 Cybele Ghossein
 Peter Giangreco
 Angela Gioe
 Nancy Goodall
 Leona A Grage
 Jill W. Graham
 Sarah S. Graham
 Jenele Grassle
 Penny Greer
 Marla B. Gross
 Cleo E. Hagen
 Sonja and Tom Hall
 Howard Hansen
 Cynthia Harris
 Sandra Hart
 Kris Hartman
 Laura Hartung
 Rev. DiAnne W. Hatch
 Seth A. Hecox
 Marcia Heeter
 Susan B. Hendershot
 Martin Hobbs
 Renee D. Hoff
 Patricia K. Hogan
 Wanda Hoover
 Judith and Michael Horsley
 Barry Huff
 Aimee and Thomas Huntsha

“

We cannot
 meaningfully
 address climate
 change without
 addressing injustice.
 Justice has to be at
 the center of our
 climate actions.

-Dr. Natasha DeJarnett,
 2020 Green Team Summit

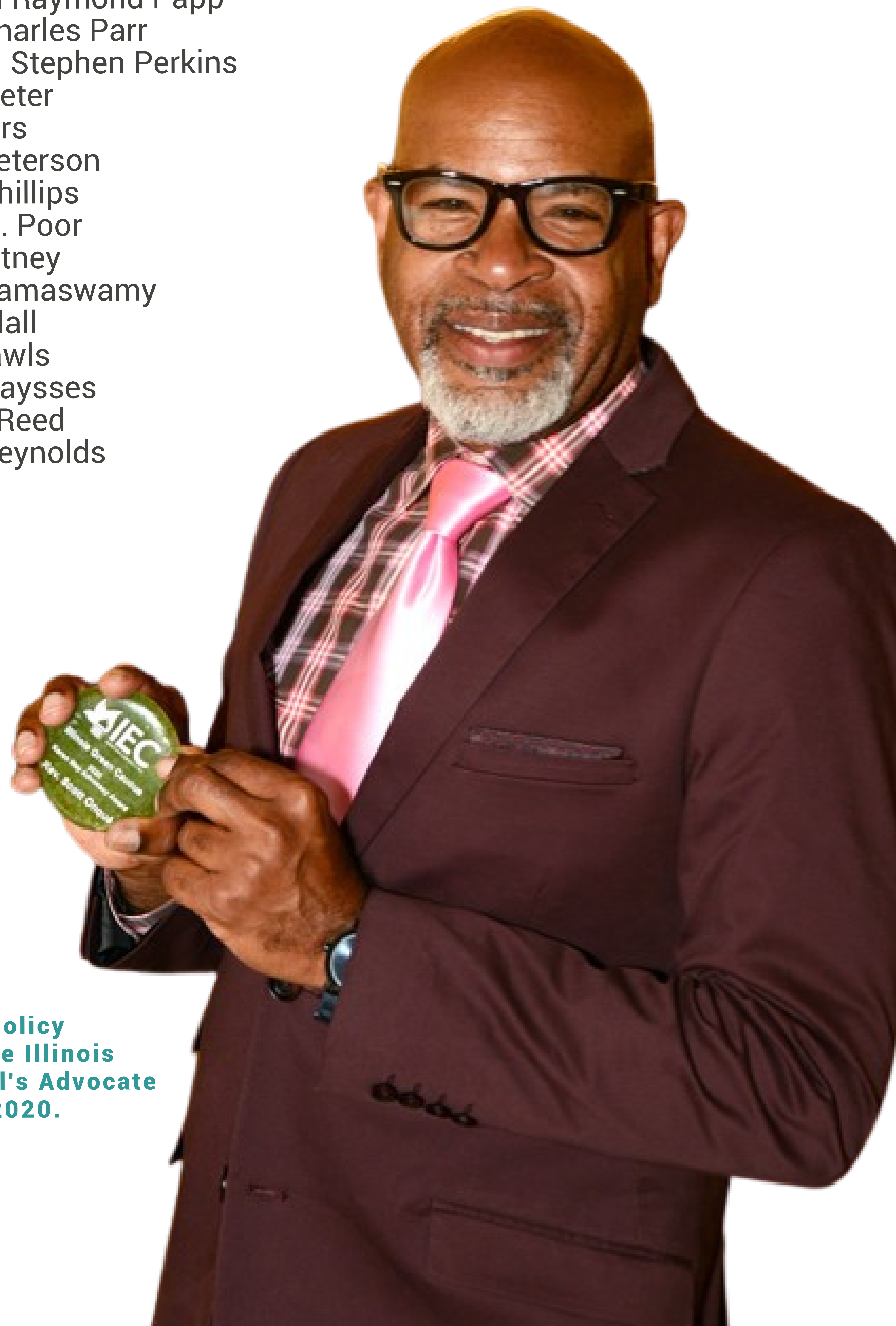


\$50 - \$249

Patricia Hyams
Sheriff John Idleburg
Jean Ives
Janet Elaine Guthrie and Mark Jaeger
Naomi Jakobsson
Daniel J. Jares
Beth and Jay Jayapalan
Christopher Johnson
Lois and Rick Johnson
Bruce Karmazin
Robin Kearton and Tom Faux
Patricia Kenny
Susan and Ron Kiddoo
Beverly and George Kieffer
Stephanie Kiesling
Terry Kilens
Terry Kinsey
William E. Koehl
Mary Krick
Ann M. Krilcich
The Rev. Hilary and Mark Krivchenia
Diane Krueger
Nancy C. Kuppersmith
Thomas Lang
Adora Lee
Ann Lee
Ann Legg
Karen Lehman
Ben Lenet
Patricia M. Lewis
Pauline and Robert Lewis
Kent Liederbach
Allan J. Lindrup
Sharon Little
Penni Livingston
Kathy Long
Lorena D. Lopez
Mary Ann Loveall
Sallee Lowery
Shirley and Roy Lundin
Callie Mabry
Sharon Madigan
Diane Wolfe Marlin and John C. Marlin
Ruthie L. Marshall
Jeanne Martin
Richard Martin
Kaye Massanari
Marta Mata-Guzman and Julio Guzman
Anton L. Mathews
Sandra and David Matteson
Rebecca McDaniel
Kimberly McGuire
Gail McPeek
Karen and Gerry Mears
Sheryl Mehrhoff
David Mendelson

Carol Michelini
John C. Modschiedler
Diane Moeller
Rev. Abigail W. Mohaupt
Tracy Moncure
Monica Moss
Eric Muhlitner
Robin Murray
Ched Myers
Rev. Moises Navarro
Marcia Z. Nelson
Pat Neri
Patricia Nolan
Dawn M. Nothwehr
Joelle G. Novey
David Oliver-Holder
Gary Oltmans
Rev. Scott Onqué
Dulce Ortiz and Octavius Hayes
Nina Otero
Julie Campbell and Thomas Over
Deborah Owen
Diane and Douglas Ower
Gregory Pagliuzza
Mike Paluchniak
Karen and Raymond Papp
Dia and Charles Parr
Robin and Stephen Perkins
Barbara Peter
Jean Peters
Karla J. Peterson
Anne B. Phillips
Priscilla S. Poor
Judy Poultney
Rashmi Ramaswamy
Paul Randall
Valerie Rawls
Kathryn Raysses
Christian Reed
Darlene Reynolds

Kristy L. Rice
Rev. Sarah C. Richards
Amanda A. Riley
Kathleen A. Robbins
Gina Roberts
Andy Robinson
Jennifer Roche
Debby and Brian Ruddell
Debbie and Steve Rugg
Terry L. Sanders
Amy and Jim Sanecki
Wayne H. Schimpff
Rev. Joy Schlesselman
Carol H. Schneider
April Sedall
Mitch Siegel
Deb Singleton
Jayne Siou
Colleen Sjostrom
Valerie K.A. Skarbek
Jeannine Skarbek-Kubas
Linda Slabon
Colleen Smith
Marcia E. Smith



Pastor Scott Onqué, Policy Director, was given the Illinois Environmental Council's Advocate of the Year Award in 2020.





Green Team member from First Congregational Church of Western Springs (above) collected styrofoam for recycling. Below is a container garden at Stone Temple Garden.



THANK YOU TO OUR 2020 DONORS

\$50 - \$249 Cont.

Linda G. Sonner
 Art Spooner
 Ruth Stoltzfus
 Matt Strauss
 Allen and Suzanne Stryczek
 Trevor Tejeda-Gervais
 Carol and David Thomas
 Amy Thoren
 Karen Hutt and Steve Tiwald
 Verna and Stephen Todd
 Aubrie M. Tossmann
 Maryfrances Troha
 Jane E. Tufts
 Susan and John Van Dyk
 Rev. Booker S. Vance
 Angelyn Vanderbilt
 Anthony Vega
 Laurie B. Vial
 Aana Vigen
 Annie Ruth Walker
 Jen Walling
 Michael A. Walsh
 Maria Fichter-Wandling and Richard Wandling
 Steven Warkentin
 Rev. Hillary A. Watson
 Catherine P. Weaver
 Jean Weber
 Rabbi Michael Weinberg
 Valerie A. Werner
 Linda Wiens
 Ellen A. Wiggins
 Caroline K. Williams
 Sodiqa Williams
 Cheri I. Wilson-Chappelle
 Peter Winkler
 Leon Zar
 Linda D. Zaugg
 Martha Zuehlke

Up to \$49

Anonymous
 Dani Abboud
 Kristina & Matt Aberle
 Beverly Acuna
 Shirley Adams
 Paula Agnew
 Jessica Albert
 Jaquie Algee
 Margaret Ali
 Scott Allen
 Nancy Alvarez
 Megan Anderson
 Terry Anvik
 Joseph Appell
 Alison Askham
 Hilary M. Austin

Tia Banks
 Dennis P. Baricevic
 Vernis Barrier
 Carolyn Bavaro
 Brad Biales
 Charity Bilal
 Aija E. Bjorklund
 Charlotte A. Blackman
 Kathleen Blumers
 Camilla Bowman
 James Boyd
 Peggy Boyer Long
 Elizabeth J. Brandt
 Dagni A. Bredesen
 Alecia Brewster
 Calvin Bridges
 Candice A. Brown
 Candice Brown
 Garrett Brown
 Sandra Brown
 Teresa Brown
 Bill Bruihler
 Janice M. Buchin
 Ann and Robert Burger
 Sandra Burke
 Karen and Colin Byers
 Rita Carter
 Theodore Chaconas
 Dori Chandler
 Elizabeth J. Chato
 Sujin Cheon
 Debra Cohen
 Angela Cole
 Roselyn M. Collins
 Georgetta Cooper
 Cathy and David Coughlin
 Mary Counter
 Rev. Anita Crittenden
 Becky L. Croteau
 Ruby Curtis
 Jean Darling
 Sheila DeRose
 Eve H. Dewan
 Dulce Dominguez
 Barbara K. Doppelt
 Joyce Dow
 Alfonzo Egeston
 Margaret Ellingson
 Judy Ellis
 Mary Emmons
 Judith Erickson
 Cynthia Ervin
 Maria Estrada
 Juliana Eventeur
 Margaret Ewing
 Samuel Feinsmith
 Marcella A. Fickes



Up to \$49 Cont.

Celia Figueroa
Susana Figueroa
Allison Fisher
Rebecca Flaherty
Sheree Flannigan
Jennifer A. Fleck
Jacqueline Forbes
Melissa A. Foster
Monica M. Fox
Jonathan Fraser
Lorell Freemon
April Friendly
Pam and Sam Furrer
Bev Gavenda
Judi Geistlinger
Lesley Gool
Shelly Gordon
Lucky Gorman
Jack D. Graber
Brian P. Granahan
Kris Grangaard
Charlotte Green
Susan A. Greenwood
Dale Griffin
Sarah R. Gruidl
Mary Grushka
Diane Guenthner
Barbara J. Gulick
Walter Hall
Rev. Holly Hallman
Rebekah Hamilton
Samira Hanessian
Annette Hayden
Deborah J. Heisley-Cato
Rhea Hermann
Melissa Hernandez
Beverly A. Hertle
Karin Heughan
Patricia L. Holmes
Margaret C. Howard
Gail P. Hueting
Judy Huynh
Sheryl T. Irving
Joan Jackson
Jesslyn Jobe
Cheryl Johnson
Ann L. Jones
Johnnie Jones
John C. Katz-Mariani
Donnelle Keech
Walt R. Kelly
Sr. Sue Kilduski, OSB
Kathryn Kinder
Dan King
Jan Kirch
Xavier Knight
Sonja Knudsen
Mary Ann Koch
Elisabeth J. Kroepel
Jeri A. Lake
Rev. Dianne Landeros

John A. Lee
Meta and Larry Levin
Elizabeth Lewis
Megan Lewis
Julia Loper
Rebecca Lorentzen
Elder Sharon C. Louis
Christine R. Mahar
Mimi N. Mahoney
Greg Malby
Mary Malone
Karina Martinez
Rachel Matthews
Katie Maxwell
Christina May
Emma Mayton
Ann McCartney
Althea McDaniel
Karen McDowell
Joy McElrath
Kady McFadden
Charlie McShane
Samantha L. Miller
Mariana Miller-D'Alessandro
Elizabeth Moore
Kathleen Moore
Megan C. Moran
John Mosele
Mykael Moss
Jim Myres
Deonte Nance
George P. Nassos
Shellie Neveles
Ken Nisly-Nagele
Nancy Nowak
Kerry A. Obrist
Steve Olshevski
Mason O'Neal
Jacquelyn O'Sullivan
Velma L. Pate
Betsy and Mark Perrine
Mary Peterson
Wanda Peterson
Eliza Poor
Deloris Powell
Christopher B. Powers
Rosalyn J. Priester
Shana Rainey
Sonia Ramirez
Susie Reed
Jonathan Reinoso
John Riles
Chuck Ripp
Stephanie Ritter
Chase Wilson Roeper
Barbara E. Rose
Teresa L. Rowan
& William Cavanaugh
Jan Sabey
Tyler Sadonis
Paul S. Safyan
Katie Sauers
Sarah Schaeffges

Cindi S. Schieber
William H. Schleizer
Rene S. Schreiner
Eva Maria J. Schuchardt
Melody Seaton
Michael Skilton
Cassandra Smith
Hilda J. Smith
Ronald A. Snell
Marilynn Snider
Kim Stone
Deborah Swietlik
Vicki Szech
Jan Thompson
Rev. David B. Thornton
Eleanor C. Thornton
Roni Thrailkill
Anthony Tindall
Lorrie Tracy
Jim Upshaw
Carolyn Urban
Jessica Vealitzek
Melissa Vickery
Briana Villarrubia
Heather Wachendorf
Haley Waiz
Marc Wakat
Kimberly Waller
Linda Walter
John F. Wasik
John B. Weber
Margaret Wedoff
Susan Wersan
Laura Wetzel
Gretchen P. White
Caroljean Willie
Linda Wingader
Deirdre Winkelhake
Leah Wiste
Leah Wyckoff
Carol J. Young
Cindy Zalewski



Stone Temple Green Team supported the creation of a stage (above) used as a center for community storytelling, music, and more.

THANK YOU TO OUR BOARD OF DIRECTORS

Karen J. Lewis, Chair
Rev. Brian Sauder, President
David Johnson, Vice-Chair
Dr. Avijit Ghosh, Treasurer
Rev. Reshorna Fitzpatrick, Secretary
Dr. Jalees Rehman
Lorena Lopez
Sodiqa Williams, Esq.
Rabbi Michael Zedek
Caroline Williams
Rev. Eileen Shanley-Roberts
Corey Coscioni

Monarch caterpillars grow in pollinator gardens, which Faith in Place helps plant across the state.



SAVE THE DATE

JOIN FAITH IN PLACE FOR OUR 6TH ANNUAL GREEN TEAM SUMMIT,
HELD VIRTUALLY SEPTEMBER 12-14TH.

REGISTER FOR FREE TODAY: WWW.GREENTEAMSUMMIT.ORG



ENTIRE WORLD AND ALL OF ITS BOUNTY. IF, AS IT MUST, IT FINDETH THE WAY
HARMONY AND PEACE, TO LOVE AND MUTUAL TRUST, IT WILL BECOME A TRUE
ABODE OF BLISS, A PLACE OF MANIFOLD BLESSINGS AND UNENDING DELIGHTS.
THEREIN SHALL BE REVEALED THE EXCELLENCE OF HUMANKIND, THEREIN SHAL
THE RAYS OF THE SUN OF TRUTH SHINE FORTH ON EVERY HAND. WE GATHER,
MANY FAITHS, BUT OF ONE WORLD WHOSE BREATH OF LIFE AND ONE DESTINY
SHARE. WHATEVER ELSE WE HOLD AS SACRED, THIS WORLD AND THE SHARED
DESTINY OF ALL LIFE IN AND OF IT ARE HOLY. LET US CONTINUE TO BE THANK
CONSCIOUS AND HOPEFUL. LET US BE THE LIGHT THAT WE SEEK FROM YOU.
HELP US BE BRAVE, COURAGEOUS, AND PATIENT IN SUFFERING, AND FAITHFUL
ADVERSITY. MAY WE HONOR ONE ANOTHER, TAKE CARE OF EACH OTHER, GLOR
YOU TOGETHER. WE THANK YOU FOR THIS OPPORTUNITY TO BUILD A COMMUNI